



# Easter

# Index



## *I ndex*

*EASTER EGGS*  
*CHOCOLATE EASTER EGGS*  
*page • page 2-5*

*GOLD BUNNY*  
*MILK CHOCOLATE RABBIT*  
*page • page 6*

*OLIVOTTI*  
*CHOCOLATE EGGS*  
*page • page 7*

*GIFT PACKAGE*  
*GIFT BOXES*  
*page • page 8-11*

*SPREADABLE CREAMS*  
*SPREADABLE CREAMS*  
*page • page 12*

*CHOCOLATE BLOCKS*  
*CHOCOLATE BLOCKS*  
*page • page 13*

*GIANDUIOTTI*  
*GIANDUIOTTI*  
*page • page 14-15*

*CUBOGHIOTTI*  
*CUBOGHIOTTI*  
*page • page 16-17*

*NOCCIOBELLA*  
*NOCCIOBELLA*  
*page • page 18-19*

*EASTER COLOMBS AND COOKIES*  
*EASTER CAKES AND BISCUITS*  
*page • page 20-21*

*FRUIT JELLIES*  
*JELLY CANDY*  
*page • page 22-23*



*Oliva*  
cioccolato dal 1924

# Ovoghiotto

*Chocolate Easter eggs*

WITH PRECIOUS  
SURPRISE  
PLATED  
SILVER  
with precious silver  
plated surprise



OVOGHIOTTO  
MILK



OVOGHIOTTO  
DARK



*cod. PA / 090*

Milk chocolate  
with surprise  
silver plated

Milk chocolate eggs  
with silver plated  
surprise

350g - 8 pcs / Mini box

*cod. PA / 091*

Dark chocolate  
extra with surprise  
silver plated

Extra dark chocolate  
eggs with silver plated  
surprise

350g - 8 pcs / Mini box



# Ghiotta Bell

*Chocolate Easter eggs*



*cod. PA / 020*

Milk chocolate  
with precious surprise  
in silver plated

Milk Bell chocolate  
with precious silver  
plated surprise

300g - 6 pcs / ct



*cod. PA / 092*

Extra dark chocolate  
with precious surprise  
in silver plated

Extra dark Bell chocolate  
with precious silver  
plated surprise

300g - 6 pcs / ct

WITH PRECIOUS  
SURPRISE  
PLATED  
SILVER  
with precious silver  
plated surprise



*Oliva*

cioccolato dal 1924

# Ovoghiotto Hazelnut

*Chocolate Easter eggs with hazelnuts*



WITH PRECIOUS  
SURPRISE  
PLATED  
SILVER  
with precious silver  
plated surprise



OVOGHIOTTO  
HAZELNUT  
DARK

cod. PA / 057P

Extra dark chocolate  
with silver plated surprise

Extra dark chocolate  
eggs with hazelnuts  
with silver plated surprise

440g - 8 pcs / Mini box



OVOGHIOTTO  
HAZELNUT  
MILK

cod. PA / 056P

Milk chocolate  
with silver plated surprise

Milk chocolate eggs  
with hazelnuts  
with silver plated surprise

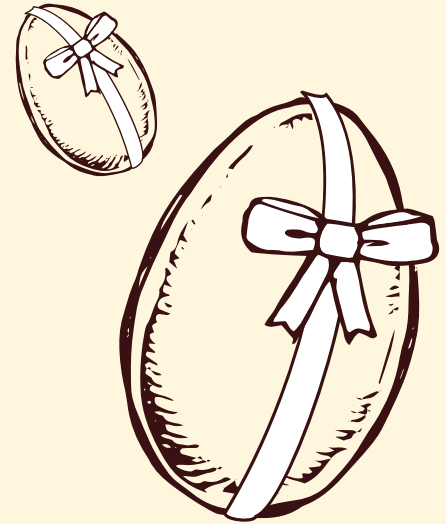
440g - 8 pcs / Mini box



# Olivotto Maxi with Plush



*L ittle choco late egg withpl ush t oy*



OLIVOTTO MAXI  
MILK  
WITH PLUSH

*cod. PA / 027*

Milk chocolate egg  
with external plush

Milk chocolate egg  
with plush toy

50g - 16pcs / exp - 1 exp / ct



OLIVOTTO MAXI  
DARK  
WITH PLUSH

*cod. PA / 028*

Chocolate egg  
extra melts  
with plush e

Dark chocolat  
with plush

50g - 16pcs / exp

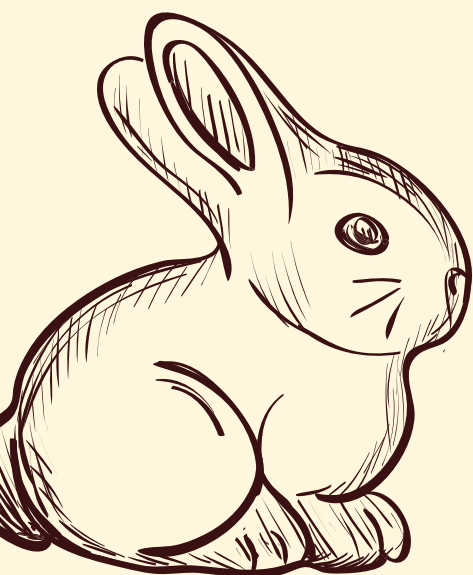




*Oliva*  
cioccolato dal 1924

# Gold Rabbit

*Mi lk choco later abb it*



POCHETTE  
GOLD RABBIT



Chocolate bunnies  
with milk with milk cream

Milk chocolate rabbit  
with milk cream filling

code PA / 099 clutch bag 200g - 10 pcs / ct

cod. PA / 100 bulk 5kg / ct



# Olivotti



*L ittle choco late eggs*



HANDBAG  
OLIVOTTI

*cod. PA / 035*

Chocolate eggs  
milk with cream  
of hazelnuts

Milk chocolate  
eggs with hazelnut  
cream in gift box

250g - 12 pcs / ct



POCHETTE  
OLIVOTTI

Chocolate eggs  
milk with cream  
of hazelnuts

Milk chocolate  
eggs with hazelnut  
cream in gift bag

*cod. PA / 001-10S* clutch bag 200g - 10 pcs / ct

*code PA/004* Bulk milk olivotti - 5kg / ct



KRYSTAL CAN  
OLIVOTTI

*cod. SCA / 193*

Chocolate eggs  
milk with cream  
of hazelnuts

Milk chocolate  
eggs with hazelnut  
cream in tin box

250g - 12 pcs / ct





*Oliva*

cioccolato dal 1924

# Lulu

*Gift boxes*



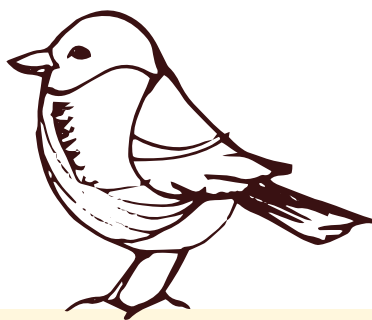
LULÙ BAG  
CUNEESI

*cod. SCA / 116*

Assorted cuneesi with liqueur  
Rhum, Limoncello,  
Amaretto, Cherry

Assorted chocolate pralines  
with liqueur cream filling  
Rum, Limoncello,  
Amaretto, Cherry

150g - 10 pcs / ct



LULÙ BAG  
CRÈME D'OR

*cod. SCA / 154*

Assorted Crème d'Or pralines  
Dark 70%, Hazelnut,  
Coffee, Milk-Cereals

Assorted chocolate pralines  
Dark 70%, Hazelnut, Coffee,  
Milk-Cereals

150g - 10 pcs / ct



LULÙ BAG  
DOLCENERO

*cod. SCA / 115*

Assorted Dolcenero pralines  
Berries, Caramel

Assorted chocolate  
pralines Caramel, Berries

150g - 10 pcs / ct





# Peony

*Gift boxes*



PEONIAMIX  
NOCCIOGHIOTTI

*cod. SCA / 169*

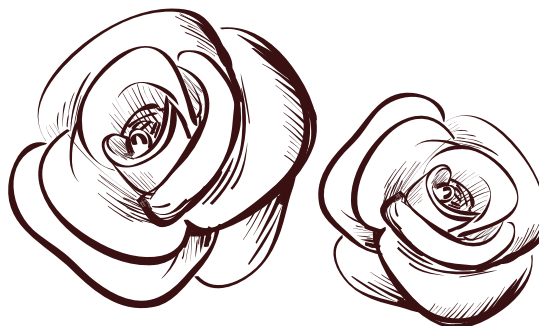
Assorted pralines  
Hazelnut, Cappuccino,  
Gianduia, Bacio di Borgo

Assorted chocolate pralines  
Hazelnut, Cappuccino, Gianduia,  
Kiss of Borgo

300g - 9 pcs / ct







PEONIAMIX  
DOLCENERO

cod. SCA / 173

Assorted pralines  
Berries, Caramel, Milk-cream,  
Cappuccino

Assorted chocolate  
pralines Berries, Caramel,  
Milk-Cream, Cappuccino

300g - 9 pcs / ct



PEONIAMIX  
DOLCEFRUTTO

cod. SCA / 170

Assorted pralines  
Berries, Caramel, Milk-cream,  
Strawberry

Assorted chocolate  
pralines Berries, Caramel,  
Milk-Cream, Strawberry

300g - 9 pcs / ct





# Artisan Creams

*Spreadable Creams*



CREAMOSETTA  
GIANDUIA

*cod. CR / 003*

Artisan cream  
Gianduia  
with 20% hazelnuts

Spreadable Gianduia  
cream with  
20% of hazelnuts

350g - 12 pcs / ct



CREAMOSETTA  
BITTER

*cod. CR / 010*

Cream  
Bitter craftsmanship

Bitter  
spreadable cream

250g - 12 pcs / ct



CREAMOSETTA  
PISTACHIO

*Code CR / 020*

Artisan cream  
Pistachio with  
20% pistachio

Spreadable pistachio  
cream with  
20% of pistachios

250g - 12 pcs / ct



# Blocks of chocolate



*Chocolate blocks*



BLOCK  
DARK 52%

cod. CI / 007

Extra dark chocolate  
Blocks 52% cocoa

500g - 10 pcs / ct



BLOCK  
DARK 70%

cod. CI / 062

Extra dark chocolate  
Blocks 70% cocoa

500g - 10 pcs / ct



Oliva

cioccolato dal 1924

# gianduiotti

*Bulk Gianduiotti chocolate pralines and Gift Boxes*



## MIX

*Code GI / 013*

Assorted Gianduiotti  
Classic, Dark,  
White

Assorted Gianduiotti  
Classic, Dark, White

180g - 10 pcs / ct



## POCHETTE GIANDUIOTTI DARK

*Code GI / 015*

Extra Dark Gianduiotti  
30% Hazelnuts

Dark chocolate  
with 30% Hazelnut

160g - 16 pcs / ct





POCHETTE  
GIANDUIOTTI  
CLASSICS

Code GI / 014

Classic Gianduiotti  
30% Hazelnuts

Classic Gianduiotti  
with 30% Hazelnut

160g - 16 pcs / ct



WHITE

Code GI / 016

White Gianduiotto  
25% Hazelnuts

White chocolate  
with 25% Hazelnut

160g - 16 pcs / ct



# Cuboghiotto

*Chocolate pralines*



## CREMINO

Code CB / 012

Extra dark chocolate  
with silver plated surprise

Extra dark chocolate  
eggs with hazelnuts  
with silver plated surprise

160g - 10 pcs / ct



Code CB / 013

Milk praline  
Dark praline

Assorted Milk  
and dark chocolate  
with hazelnut grain

160g - 10 pcs / ct







POCHETTE  
CUBOGHIOTTO  
MIX

Code CB / 014

Pistachio, Bitter,  
Gianduia

Assorted Pistachio pralines,  
Bitter, Gianduia

160g - 10 pcs / ct



Code CB / 015

Milk and Dark  
with whole hazelnuts

Assorted milk  
and dark pralines  
with whole hazelnut

160g - 10 pcs / ct



# Nocciobella

*Chocolate pralines*



POCHETTE  
NOCCIOBELLA  
DARK

Cod. NB / 004

with 4 whole hazelnuts

4 whole hazelnut covered  
with dark chocolate

130g - 10 pcs / ct



POCHETTE  
NOCCIOBELLA  
MILK

Cod. NB / 005

with 4 whole hazelnuts

4 whole hazelnut covered  
with Milk chocolate

130g - 10 pcs / ct





Cod. NB / 006

with 4 whole hazelnuts

4 whole hazelnut covered  
with white chocolate

130g - 10 pcs / ct

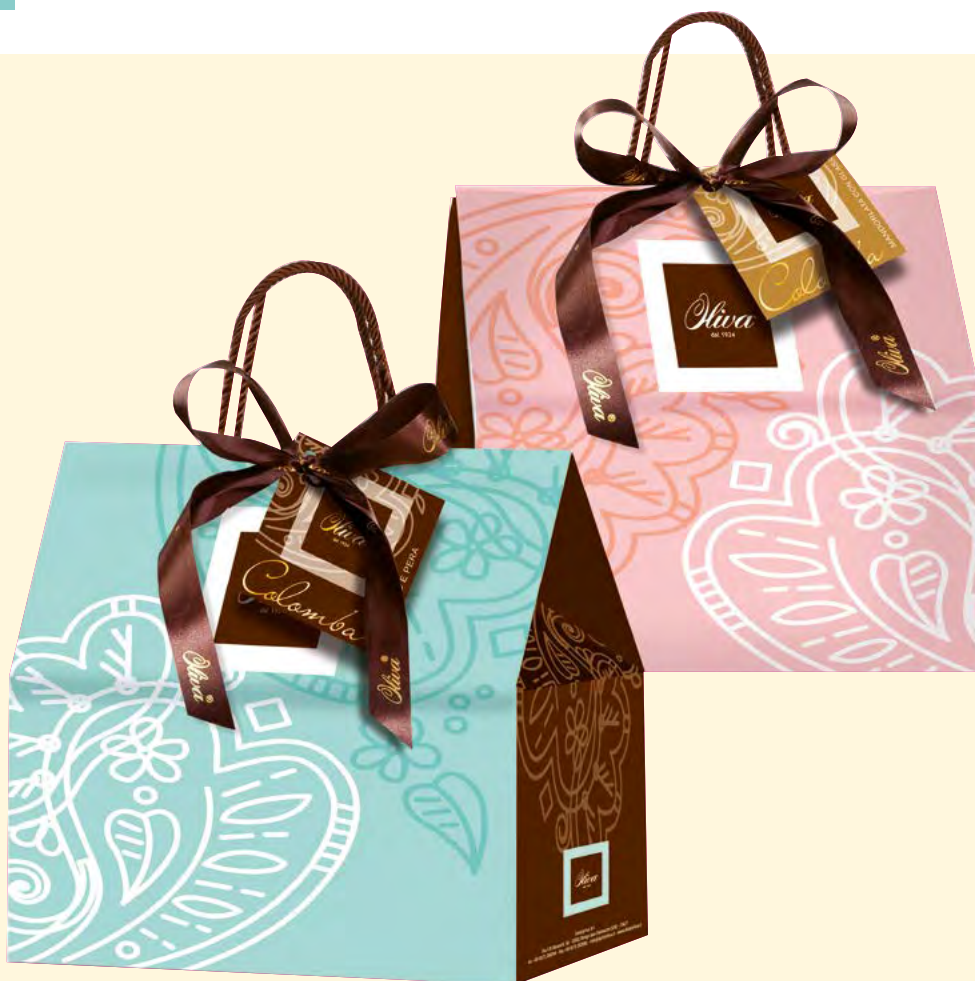




*Oliva*  
cioccolato dal 1924

# Doves

*Eas ter Cakes*



DOVE  
CLASSIC

DOVE  
CHOCOLATE AND PEAR

*cod. PA / 021S*

*cod. PA / 082*

IN SHOPPER CASE

IN SHOPPER CASE

Classic colomba with almond

Colomba with chocolate and pear

Classic Easter cake  
with almonds

Easter cake with  
chocolate and pear

750g - 6 pcs / ct

1kg - 6 pcs / ct

# Pastry



*Haze l nu ts cakes and B i scu its*



LA NOCCIOGHIOTTA



LADY'S KISSES

*cod. TO / 001*

Case with window  
'Ancient recipe of the house' hazelnut cake, made with 'Tonda Gentile' hazelnuts  
Trilobata ', Marsala and eggs.

Hazelnut Cake  
'La Noccioghiotta'  
old recipe of the house 'with'  
Tonda Gentile Trilobata 'Hazelnuts,  
Marsala wine  
and eggs in Window box

500 g - 8 pcs / ct

*cod. BI / 049*

Bow envelope  
Classics with hazelnuts  
single-dose wrapped

Typical Piedmont biscuit  
with hazelnut in single wrapping

180g-10 pcs / ct

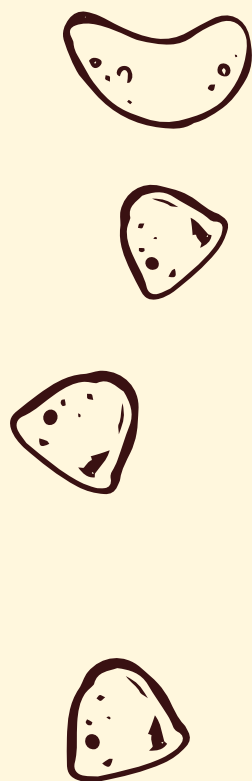
*cod. BI / 050*  
BACI DI DAMA LOOSE  
Loose / Bulk 5kg / ct





# Fruit Gelées

*Soft Candy Gelées*



KRYSTAL CAN  
GELÉES

*cod. SCA / 192*

Soft jellies  
wrapped  
fruit 22%

Soft candy  
gelées 22% fruit  
in tin box

200g - 12 pcs / ct





HANDBAG  
GELÉES

*cod. PA / 036*

Soft jellies  
fruit 22%

Soft candy gelées  
22% fruit

250g - 12 pcs / ct



POCHETTE  
GELÉES

*cod. CA / 002*

Soft jellies  
fruit 22%

Soft candy gelées  
22% fruit in gift bag

200g - 10 pcs / ct





The logo for Dulcioliva, featuring the brand name in a stylized script font above the text "cioccolato dal 1924".

*Dulcioliva*  
cioccolato dal 1924

# Our Quality

## *Our Quality*

Also located in Borgo San Dalmazzo, in the province of Cuneo, today Dulcioliva has a modern plant of 3000 m<sup>2</sup> surface equipped with technologically advanced systems. Thanks to eighty years of experience in the confectionery sector, Dulcioliva has developed a dynamic company capable of combining the best traditional Italian recipes with the most modern production technology with the philosophy of creating authentic products in full compliance with the most advanced principles of safety and product quality.

Its HACCP system has been implemented since 1998 and is constantly monitored and reviewed. It is a precise company choice to produce without the use of artificial additives, hydrogenated vegetable fats and preservatives. All raw materials come from selected and consolidated suppliers who offer concrete guarantees on their quality and safety.

In all our hazelnut-based products, only 'Tonda Gentile Trilobata' variety hazelnuts are used, while in our Rum Cuneesi only original Jamaica rum is used. Concrete monitoring of the entire production chain allows traceability from the product to the raw material. All this, combined with an efficient commercial work, has brought us the trust of the best national and international customers, a trust confirmed thanks to the achievement of IFS and BRC certifications.

*Nowadays we are still located in Borgo San Dalmazzo, in the nearby of Cuneo in Piedmont. Today we are proud to show our new warehouse with 3000 m<sup>2</sup>, with up-to-date technologies such as Photovoltaic panels charged by the sun which supply all energy used for the production of our goods. Thank to more than 80 years of activity in the field of sweets, we have become a dynamic company able to join the best recipes of Italian tradition with modern productive technology, with the following philosophy: to create authentic products in the real respect of security norms and product quality. Our HACCP system was established since 1998 and it is constantly monitored and checked. The concrete monitoring on all productive line allows traceability of products starting from raw materials. It is our firm belief to produce without artificial additives, conservatives, hydrogenated fats or animal fats other than Cocoa butter. All raw materials we use come from highly selected suppliers, who can guarantee their quality and security.*

*For all our hazelnut-based products, we exclusively use Hazelnuts from Piedmont of top quality kind: "Tonda Gentile Trilobata", while for our Rum Cuneesi with Rhum we only use original Rhum from Jamaica. The points mentioned above, together with an efficient commercial work, led us to be trusted and beloved both by our national and international customers; a trust awarded with IFS and BRC certifications.*





DULCIOLIVA srl  
via F.lli Rosselli, 63  
12011 Borgo San Dalmazzo (CN) Italy tel. +39  
0171 269764  
info@dulcioliva.it • www.dulcioliva.it